

The WZA-SE series

OEM weigh cells



OEM weigh cells

WZA614-NC

Outstanding features:

The WZA-NC series is the successor of the well established WZ...CW-line. The products provide a readability of 0.1 mg for the weighing capacity of 610 g. The weighing system as well the electronic are designed for space sensitive applications in stainless steel housings.

The weigh cell consist of two parts:

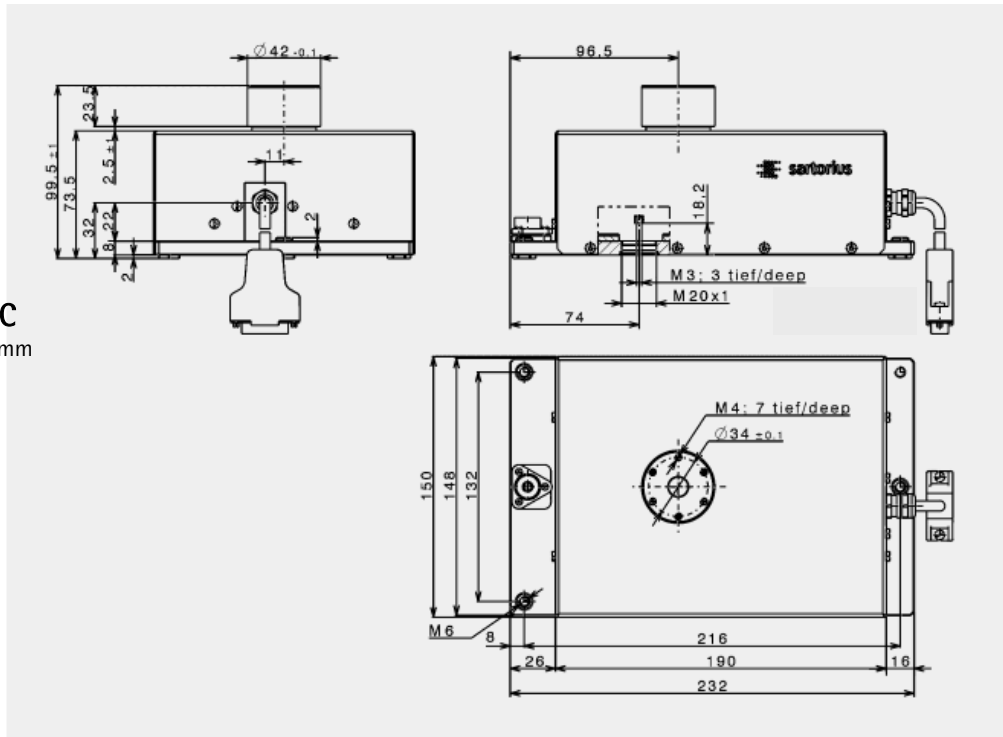
- A monolithic weighing system in stainless steel IP44 housing
- Stainless steel electronic box, all connection via the front
- Force compensation technology system with a resolution of 0.1 mg
- Superb electronics for more than 6 Mio. step resolution
- Internal calibration weight for easy checks in automated environments
- Adjustable load receptor with overload protection, optional lift-off protection
- Fast warm-up by separation of weighing system and electronics
- USB/ RS232C interface for configuration and data transfer

Optional PC-software with menu setting, weigh data display and internal calibration functions

Model WZA...	614-NC
Capacity	610 g
Readability	0.1 mg



WZA614-NC
Dimensions in mm



Technical Data

Model	WZA614-NC
Capacity	610 g
Readability	0.1 mg
Preload ¹⁾	90 g
Repeatability (standard deviation) ²⁾	≤ ± 0.2 mg
Linearity	≤ ± 0.5 mg
Measuring time ²⁾³⁾	1.5 s / ± 0.1 mg
Operating temperature range	+10 ... +30 °C
Allowable temperature range	+5 ... +40 °C
Weigh cell dimension	150 x 232 x 99 mm (base x height)
Electronic Box dimension	196 x 142 x 42 mm (base x height)
Load receptor (adjustable, with overload protection)	42 mm (diameter), 26 +2/-1 height above housing
Under floor load receptor	Not available
Cable length weigh cell to electronics	2.8 m
Power supply	TNG10 / 6971987; 115/230 V _{AC} ; +15 ... - 20%, 48-60 Hz
Power supply (alternative)	15...26, optimal 15V (+15% -10%); 0.5V _{PP} (Peak to Peak)
Power consumption	9 VA (average)
Interface	USB-B, RS232C, software / hardware handshake; No system power via RS232 connector
Options / Accessories	
Windows configuration software for test and adjustment	Sartorius CAS Suite
Liquid-crystal display	YAC01CU

Sartorius Weighing Technology
Weender Landstrasse 94-108
37075 Goettingen, Germany

Phone +49.551.308.0
Fax : +49.551.308.3502

info.mechatronics@sartorius.com
www.sartorius-mechatronics.com

- 1) the preload can be configured by using the Sartorius CAS Suite software; higher preload will reduce the weighing range
- 2) depending on measurement equipment set-up and conditions;
- 3) measuring time is the time in which the measured value is in the given range around the static end value; test weight is approx. 25% of the weighing range.

Specifications are subject to change without notice.

Current status: November 2013
Version: 2.0